

COMMUNITY SAFETY FORUM

Agenda Item 32
Brighton & Hove City Council

Subject: Crime Trends and Performance in Brighton and Hove
Date of Meeting: 8 December 2008
Report of: Director of Environment
Contact Officer: Name: Ruth Condon Tel: 29-1103
 E-mail: ruth.condon@brighton-hove.gov.uk
Key Decision: No
Wards Affected: All

FOR GENERAL RELEASE

1. SUMMARY AND POLICY CONTEXT

1.1 This report describes crime trends up to August 2008 and reports progress against key crime targets relating to the Community Safety, Crime Reduction and Drugs Strategy, 2008-11.

2. PERFORMANCE AGAINST TARGETS FOR KEY CRIME TYPES, 2008/09

2.1 April 2008 to end of October 2008

	number of crimes Apr-Oct 2007	number of crimes Apr-Oct 2008	reduction on target (from 2007/08 baseline)	2008/09 performance to end October compared with same period in 2007/08		better or worse than same period in 2007/08	
				on target	not on target	better	worse
areas with targets			target	on target	not on target	better	worse
Total Crimes	17,135	15,501	-5%	-9.5%		☺	
Criminal Damage	2,999	2,636	-5%	-12.1%		☺	
Serious Violence (GBH/more serious violence)	93	91	-10%		-2.2%	☺	
Assault: Less Serious Injury (ABH)	1406	1216	-5%	-13.5%		☺	
Domestic Burglary	606	730	-5%		+20.5%		☹

Theft from/of a Motor Vehicle	1,204	1,380	-6%		+14.6%		☹
Pedal Cycle Theft	586	692	-10%		+18.1%		☹

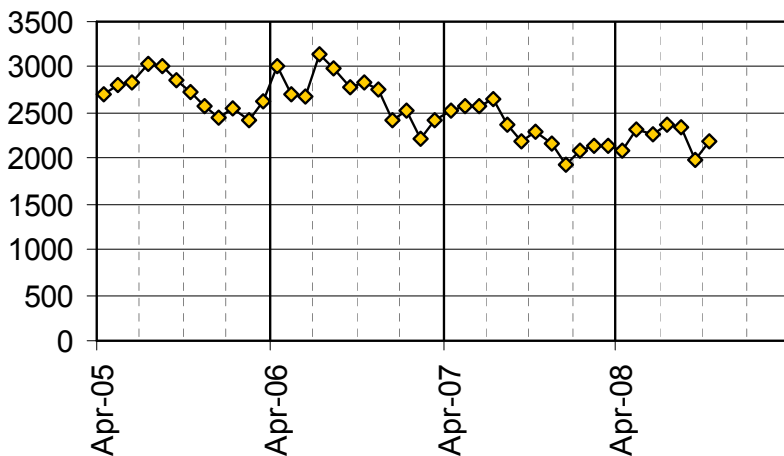
2.2 MAIN POINTS

After 7 months (April 2008 – October 2008) total crimes have reduced by 9.5% compared with the same period in the previous year, in excess of the target.

Criminal damage and assaults with less serious injury, both high volume crime types, are showing very good reductions at this stage. Domestic burglary and cycle theft, part of the Acquisitive Crime section in the Strategy, are showing a notable increase. Overall vehicle theft is also showing an increase. This is due to an increase in theft from vehicles; thefts of vehicles continue to show a decline.

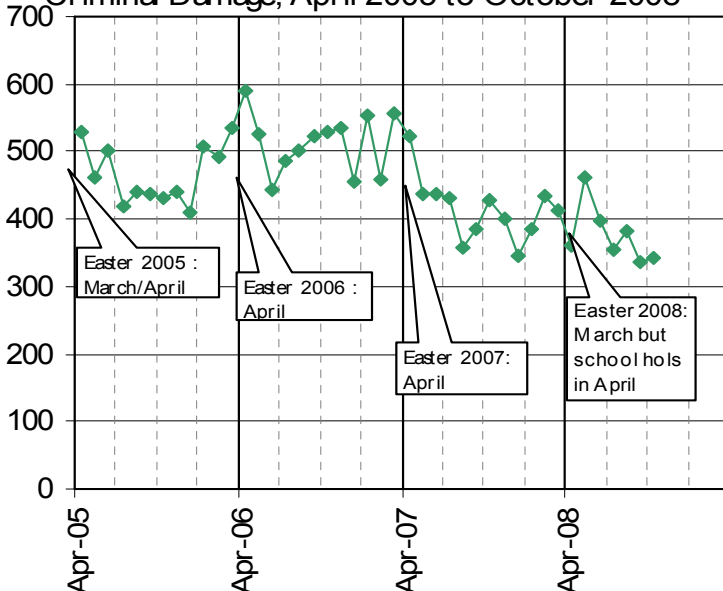
3. CRIME TRENDS UP TO AUGUST 2008

Total Crimes, April 2005 to October 2008



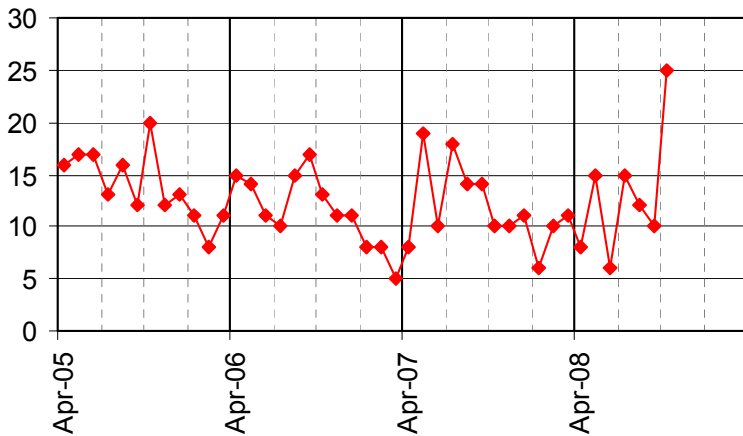
3.1 The number of total crimes in the first 7 months of 2008/09 is 9.5% lower than in the same months last year. The number of crimes in the last two months has decreased since the summer, in line with typical seasonal trends.

Criminal Damage, April 2005 to October 2008



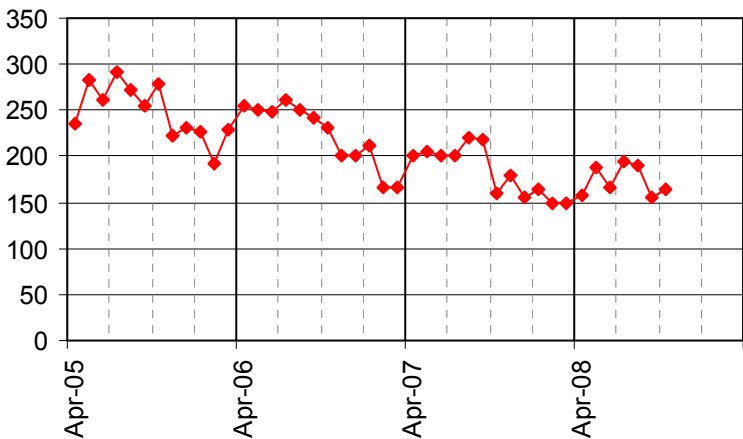
3.2 The downward trend in criminal damage has continued, with the number of crimes in the last 2 months being at their lowest since April 2005.

Serious Violence (GBH+)
April 2005 to October 2008



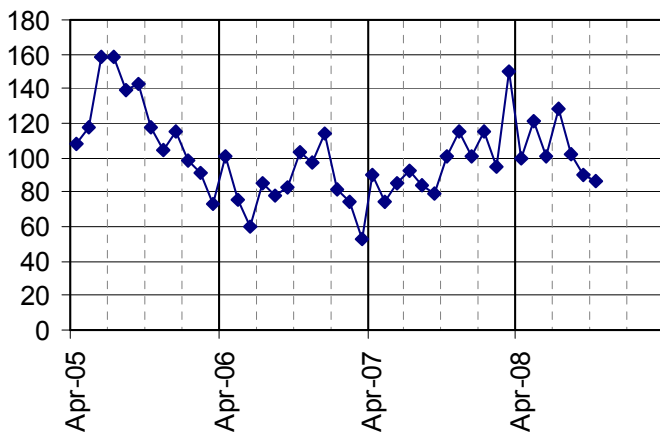
3.3 NOTE: There has been a nationwide review of police compliance with the recording criteria for serious violent crimes. Police recorded violence data is currently under review and the data presented here and in the graph below may be subject to change.

Assault with Less Serious Injury (ABH)
April 2005 to October 2008



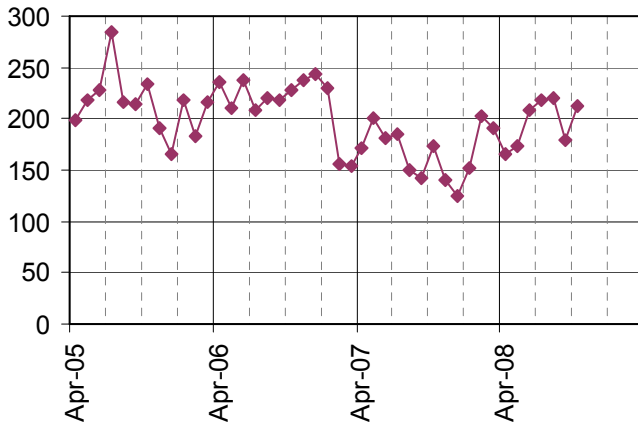
3.4 Numbers for the first 7 months of 2008/09 are 13.5% fewer than the same months last year and the year on year decline appears to be continuing. Numbers in September and October are lower than in the summer months.

Domestic Burglary, April 2005 to October 2008



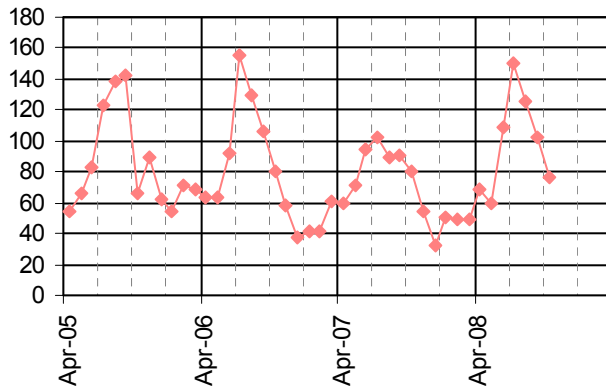
3.5 Numbers of domestic burglaries were showing a long term declining trend in the years up to 2006/07 but rose consistently during 2007/08. Domestic burglaries have increased by 20.5% between April and October 2008 compared with the same months last year, but levels have dropped in the last 2 months and performance is improving.

Vehicle Crime, April 2005 to October 2008



3.6 Comparing levels in the first five months of 2008/09 with same months in 2007/08, theft of and from (all vehicle crime) has increased by 14.6%. However, thefts from a vehicle have risen by 35% while thefts of a vehicle have fallen by 21%.

Theft of a Pedal Cycle, April 2005 to October 2008



3.7 Pedal cycle theft shows a strong seasonal effect related to the months when more people cycle. Numbers in the first seven months of 2008/09 are 18% greater than in 2007/08 and at about the same level recorded in 2006/07.